



Belsize Square NW3

Parkheath
Sold on Service





Belsize Square, NW3 £825,000, Leasehold

Camden Band E

- An amazing apartment on the entire first floor
- Substantial one bedroom flat of 734 sq ft approx
- Set in imposing end of terrace period conversion
- Magnificent centre rose, ceiling coving, feature fireplace, sash windows
- Absolutely stunning 21ft open plan reception
- Sleek, contemporary kitchen
- Spacious 13 ft bedroom
- A fine blend of period features and contemporary touches
- Gorgeous bathroom with separate shower room
- Set in this quiet square in the heart of Belsize Park

Belsize Park
208 Haverstock Hill
NW3 2AG
Sales 020 7431 1234
Lettings 020 7431 3104
nw3@parkheath.com

South Hampstead
8a Canfield Gardens
NW6 3BS
Sales 020 7625 4567
Lettings 020 7644 0800
nw6@parkheath.com

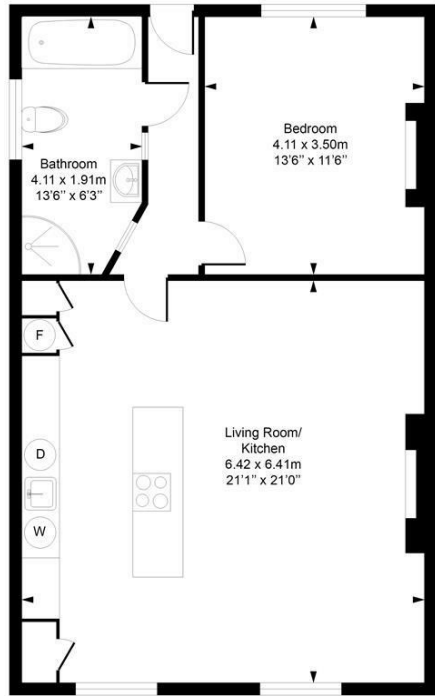
West Hampstead
192 West End Lane
NW6 1SG
Sales & Lettings
Tel 020 7794 7111
192@parkheath.com

Kentish Town
148 Kentish Town Rd
NW1 9QB
Tel 020 7485 0400
kt@parkheath.com

Kensal Rise
54-56 Chamberlayne Rd
NW10 3JH
Tel 020 8960 4845
kensal@parkheath.com

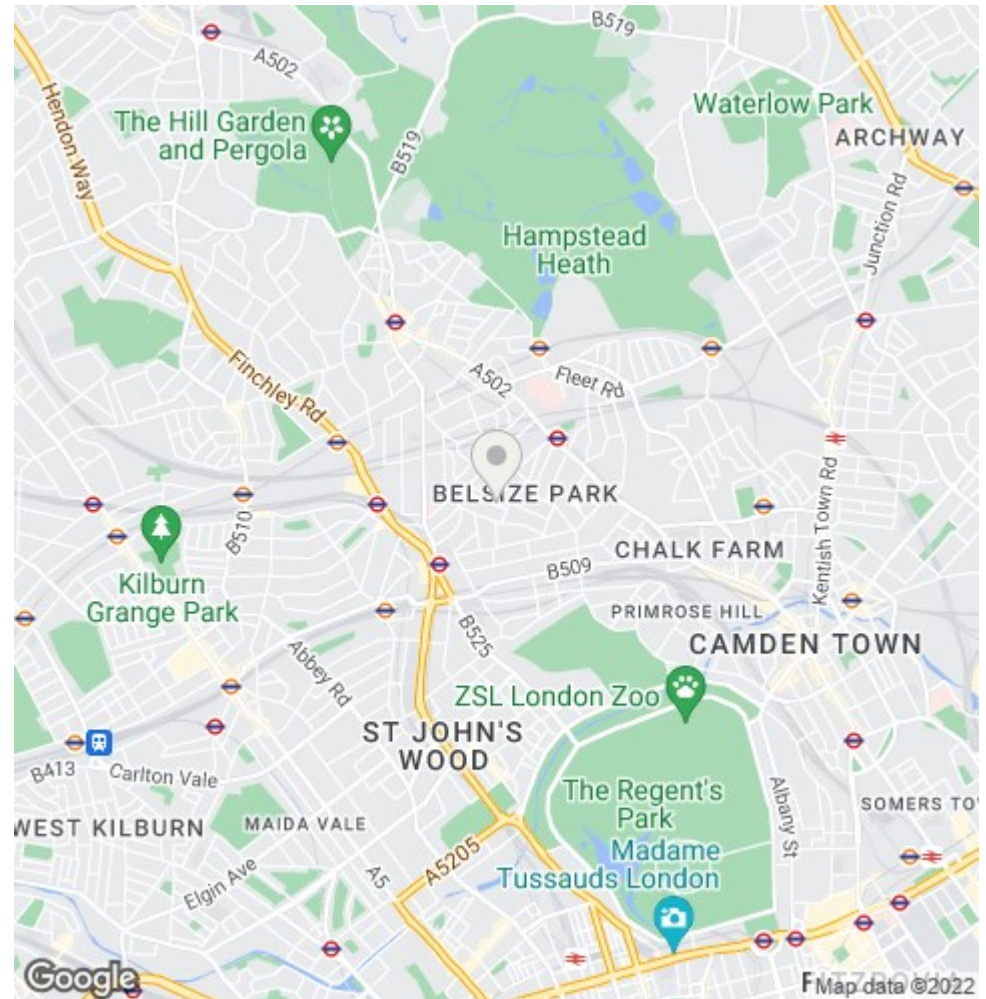
Property Management
148 Kentish Town Rd
NW1 9QB
020 7433 6174
pm@parkheath.com

Belsize Square
Approximate Gross Internal Area = 68.2 Sq m / 734 sq ft



First Floor

Measured in accordance with RICS guidelines. Every attempt is made to ensure accuracy
However all measurements are approximate.
The floor plan is illustrative purposes only and is not to scale
ELLIE CLAIRE PHOTOGRAPHY LTD
www.ellieclairephotography.com



The particulars do not constitute part of an offer or contract. The particulars, including text, photographs and plans, are for the guidance only of prospective purchasers/tenants and must not be relied upon as statements of fact. The descriptions provided therein represent the opinion of the author and whilst given in good faith should not be construed as statements of fact. Nothing in these particulars shall be deemed a statement that the property is in good condition or otherwise or that any services or facilities are in good working order. All measurements are approximate